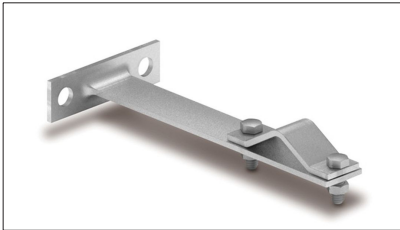


DATASHEET

CATEGORY: Light anchorage
 NAME: **30cm light anchorage (2 supp) to screw**
 REFERENCE: **AT-042B**

PRODUCT DESCRIPTION

30cm light anchorage (2 supports) to screw into the wall. Galvanized steel.



Anchorage to fix 1" - 1½" mast to the wall.

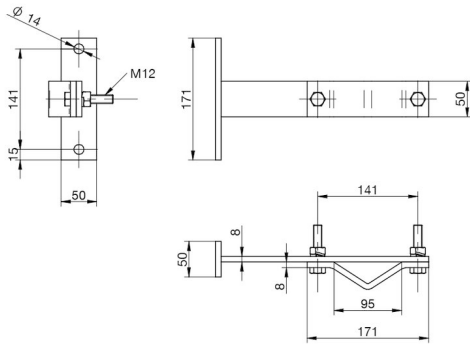
> Application



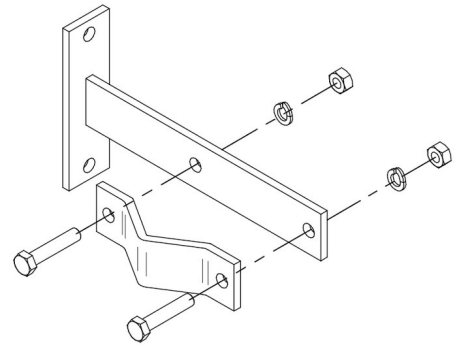
DATASHEET

Reference	AT-042B
Weight	4,2 kg
Materials	Galvanized steel
Length (1 support)	300 mm
Width (1 support)	165 mm
Height (1 support)	50 mm
Dimensions of the tape	50 x 8 mm
Number of supports	2
Separation from the wall	30 cm
Standards	Complies with UNE 21186, NF C 17-102, IEC 62305

> Diagram (mm)



> Components



INSTRUCTIONS

> INSTALLATION

The anchorages need a minimum of 60 cm between each other and at least 30 cm from the top of the wall in order to ensure correct attachment.

OTHER INFORMATION

> RELATED PRODUCTS



AT-056A
ø1½" x 6m galv.steel
mast (2 sect)