

DATASHEET

CATEGORY: DAT CONTROLER® PLUS
 NAME: **DAT CONTROLER® PLUS 15 - ESE Air Terminal**
 REFERENCE: **AT-1515**



PRODUCT DESCRIPTION

DAT CONTROLER® PLUS 15: Early Streamer Emission air terminal. Advance time: 15 µs. Material: Stainless steel AISI 316L.



Advance time: 15 µs obtained according to UNE21186:2011 tests.

AENOR product certification.

Withstand current higher than 250kA (10/350µs wave).

Certificate of performance under rain (Insulation > 95% according to EN 60060).

No external power supply required.

Protection radius up to 75 meters according to NF C 17102 and UNE21186.

Certificate of use in explosive atmospheres (ATEX).



DATASHEET

Reference	AT-1515
Length	120 mm
Width	120 mm
Height	551 mm
Weight	4635 g
Materials	AISI 316L stainless steel
IP Code	IP67
Working temperature	-25 °C to 88 °C
Internal insulation	Polyurethane resin
Fixing	M20 male thread

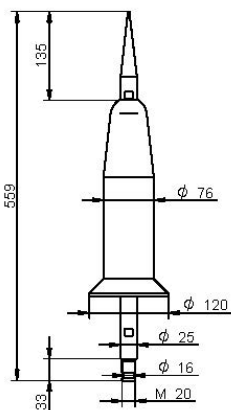
Type of air terminal	Electropulsator (emits impulses)						
Certified advance time (ΔT)	15 μs						
Protection radius (m)							
Height for protection radius	2	4	6	8	10	20	60
Protection radius (m) for Level I	13	25	32	33	34	35	35
Protection radius (m) for Level II	15	30	38	39	40	44	45
Protection radius (m) for Level III	18	36	46	47	49	55	60
Protection radius (m) for Level IV	20	41	52	54	56	63	75
Tested current	20 x 200kA + 5 x 250kA (10/350 μs wave)						
Standard deviation ratio ESE/Simple rod	< 0,8						
Standards	Complies with UNE 21186:2011; NF C 17-102:2011; NP 4426:2013						

> Certifications and tests

AENOR Product Certification of accordance with UNE 21186 standard
 Withstand current certificate for 20 x 200kA + 5 x 250kA (10/350 μs wave)
 Certified advance time
 Certificate of unalterable performance under rain applying the standard EN 60060-1:2012
 Radius protection certificate and regulation compliance (UNE 21186, NFC 17-102)
 Certificate of use in explosive atmospheres (ATEX).
 UL Certified (E538101)
 Manufactured according to ISO 9001 and following ISO 14001 environmental management standard



> Diagram (mm)



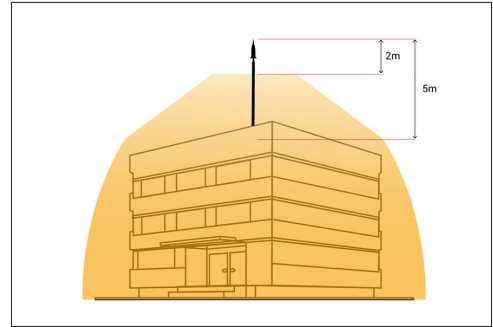
INSTRUCTIONS

> INSTALLATION

ESE air terminal protection radius depends on its height related to the surface to be protected, its advance time ΔT and the protection level.

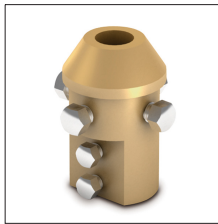
The installation of DAT CONTROLLER® PLUS air terminals should follow the standards NF C 17-102:2011, UNE 21186:2011 and NP 4426:2013.

The air terminal should be at least 2 meters higher than any object to be protected.



OTHER INFORMATION

> RELATED PRODUCTS



AT-011A
Brass adap.piece M20,
1½"mast+cable/tape



AT-004G
ATLOGGER